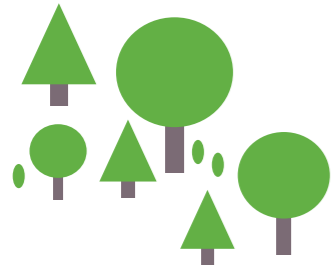




TO CHOOSE METSÄ'S SUSTAINABLE APPROACH



20 reasons to choose Metsä's sustainable approach



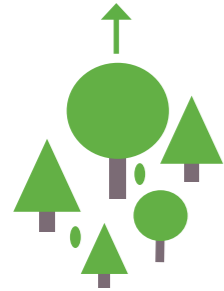
Metsä Tissue is one of Europe's leading manufacturers of tissue paper products for professional and home use. **Metsä actually translates to Forest** and as one of the largest forest Groups in the World, with more than 150 years of forestry trading, Metsä understands that the sustainable use of forests creates well-being, mitigates climate change, maintains biodiversity and prevents deforestation.



Metsä Tissue has received the highest Platinum rating, for the third time in a row, with the EcoVadis Sustainability and Social Responsibility evaluation. The company is among the **top 1% of companies rated by EcoVadis**.



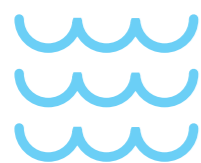
Metsä is building the future based on natural resources. Trees play a crucial role in the earth's eco-system. They capture and store billions of tonnes of carbon dioxide while at the same time **providing the planet with much needed oxygen**. They emit particularly large quantities of oxygen during the growing phase – hence underlining the importance of continually replanting new trees. We take care of nature and people responsibly, expand industry sustainably, and replace fossil-based products with renewable ones.



Metsä's products are made from **sustainable Northern wood**, where forests grow more than they are used. It is law in Finland that any cut tree must be replaced by 4 seedlings, and this does not take into account natural seeding. Katrin is made by Metsä Tissue, part of Metsä Group, whose owner members own more than 40% of the forests in Finland, and who plant **30+ million trees year on year**, creating a vast carbon sink. There has been a **30% increase in carbon stored in Metsä Forests, since 2018**.



Metsä is continually working towards a sustainable future, and have **set goals & targets** that we report against openly: <https://bit.ly/3QOMvS3>



Metsä Group's key objectives include mitigating climate change and adapting business operations to a low-carbon future. Our 2030 climate and environmental objectives are, among others, fossil free mills, the full use of production side streams and a 25% increase in the efficiency of process water use.



20 reasons to choose Metsä's sustainable approach

The raw materials used in Metsä Group's products processed from northern wood are 99.6% fossil-free. Our goal by 2030 is 100%.



In 2021, **87% of Metsä Group's production was run with renewable energy** (Scopes 1 and 2). The share of bio-based fuels was 90% (90).



In 2021, Metsä Group produced over **15% of the renewable energy** in Finland.

In cooperation with AFRY, Metsä Tissue has calculated the carbon footprint of toilet paper in its eight European mills, and explored the differences in the footprints of toilet papers made of fresh and recycled fibres. The results indicate that a roll of toilet paper made of fresh fibre has a carbon footprint that is approximately **20% smaller** than a roll made of recycled fibre.

Katrin dispensers are recyclable. In addition, the Black plastic in our black dispensers is made from recycled plastic.

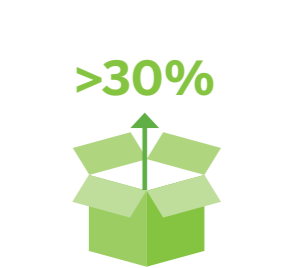
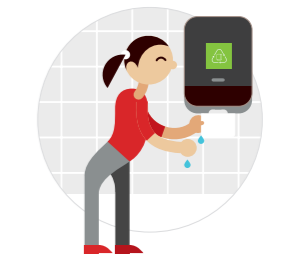
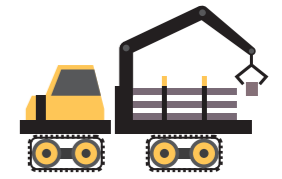


Katrin's system products use plastic plugs made from 100% recycled plastic.

With Katrin products, you can use our Carbon calculator to understand and compare the carbon footprint* of Katrin products.

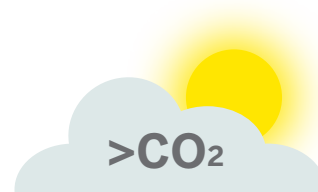
Metsä Tissue complies with the **UK Plastic tax** so our customers do not have to worry. We report on weights of any plastics in scope on our invoices. After substantial investment in packaging design, in the past 18 months, it is likely that no tax will be due in the first year of this law, as we have moved all relevant products to plastic that contains at least 30% recycled material.

*The CO₂e calculation is a third party calculated "cradle-to-gate" figure.



20 reasons to choose Metsä's sustainable approach

The packaging of our products and pallets has a big impact on the efficiency of logistics as well. We are committed to developing our logistics and reducing carbon emissions from transport by 22% from 2019 level. For example, after opening a new tissue line in our Raubach mill, we increased the number of sheets of a household hand towel product by 25% while keeping the same external roll diameter. This decreased the number of truckloads **from 8300 truckloads to 6600**, reducing CO₂ and other **transportation emissions of 1,700 trucks per year**.



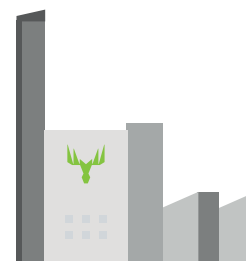
Metsä's products are chain of custody certified using **FSC or PEFC** (and sometimes both). These certifications are both **recognised world-wide**, and are proof of sustainable forest management practices, and will ensure compliance with international governmental legislation (eg UK Timber Policy).



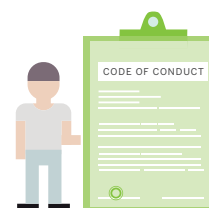
Many of Metsä's products are **EU Ecolabel and/or Nordic Swan certified**. These are certifications recognised worldwide, and the labels are designed to promote products that deliver a reduced environmental impact during their entire life cycle and to provide consumers with accurate, non-deceptive, science-based information on the environmental impact of products.



All manufacturing is conducted in mills certified to **ISO standards** in quality, environmental, safety, hygiene and energy management production.



We require our suppliers to commit to the **Metsä Group Supplier Code of Conduct** or a supplier's own equivalent code.



Metsä products are **certified by the CHSA**, which gives another guarantee that we trade ethically and sustainably; provide quality, products are fit for purpose products; and **that what we say on the box is what's actually in the box**.



Metsä Tissue Ltd.
2 Walton Lodge, Bridge Street
Walton on Thames, Surrey
KT12 1BT, UK

Tel. +44 (0) 845 601 8266
Fax. +44 (0) 845 601 8277
www.metsagroup.com/metsatissue